



9 Lime Trees, Chilton, Oxon, OX11 0HW

£1,750 PCM - 10th July 2026

- Detached House In Popular Village
- Double Garage
- 3 Double Bedrooms, 1 Single Bedroom
- EPC Rating D
- Enclosed Garden

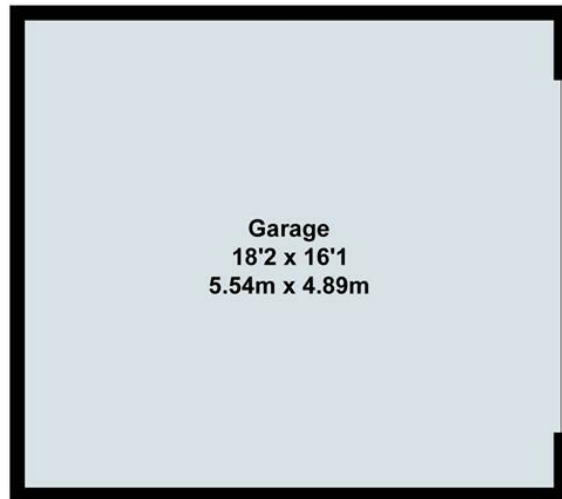
9 Lime Trees, Oxon OX11 0HW

Located in a very quiet cul-de-sac location, a four bedroom, detached house in this popular village with good access to the A34, Harwell and Milton Park. Comprising fully fitted kitchen with cooker, sitting room, dining room, downstairs cloakroom, 3 double bedrooms, en-suite to bedroom one, one single bedroom, bathroom with shower over bath. Enclosed rear garden, shed, double garage with electric door. Oil central heating. All UPVC windows.

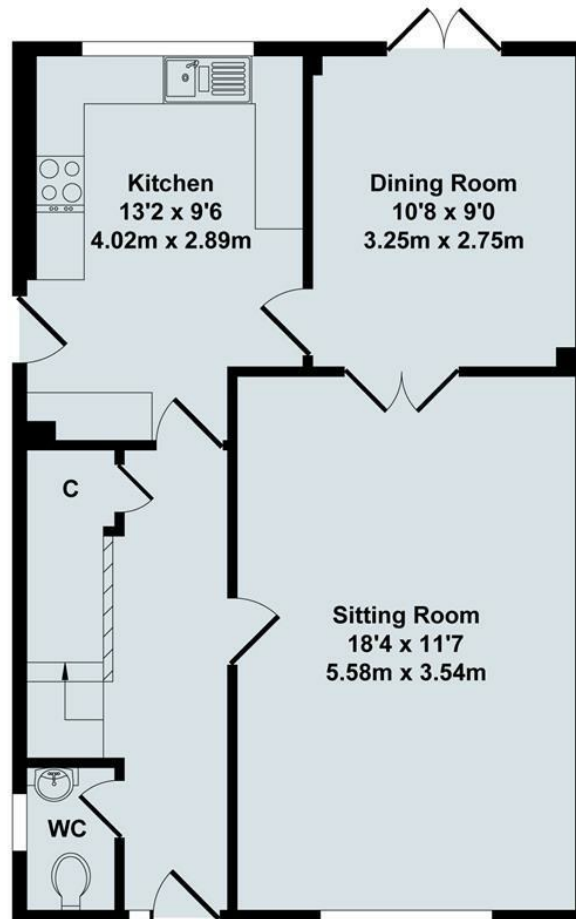


Council Tax Band: E

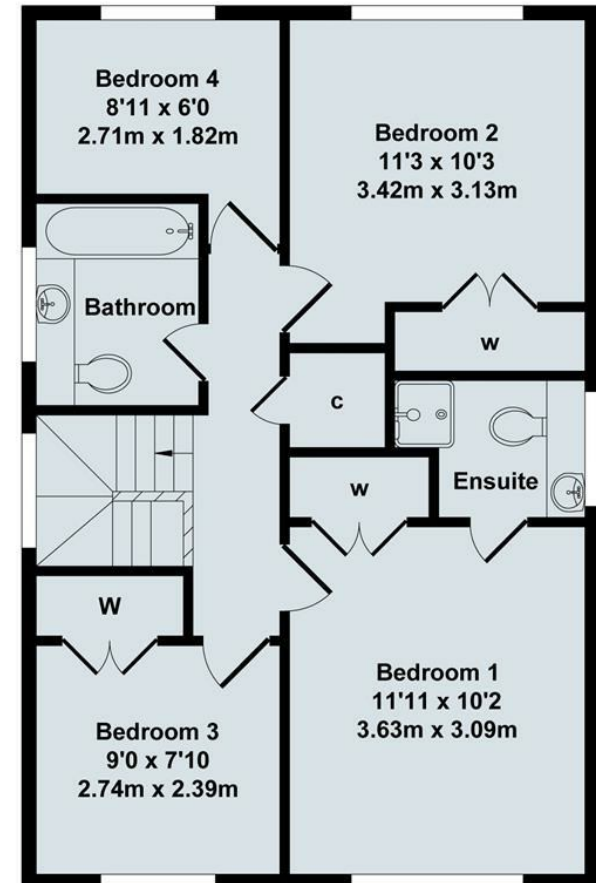




Garage



Ground Floor




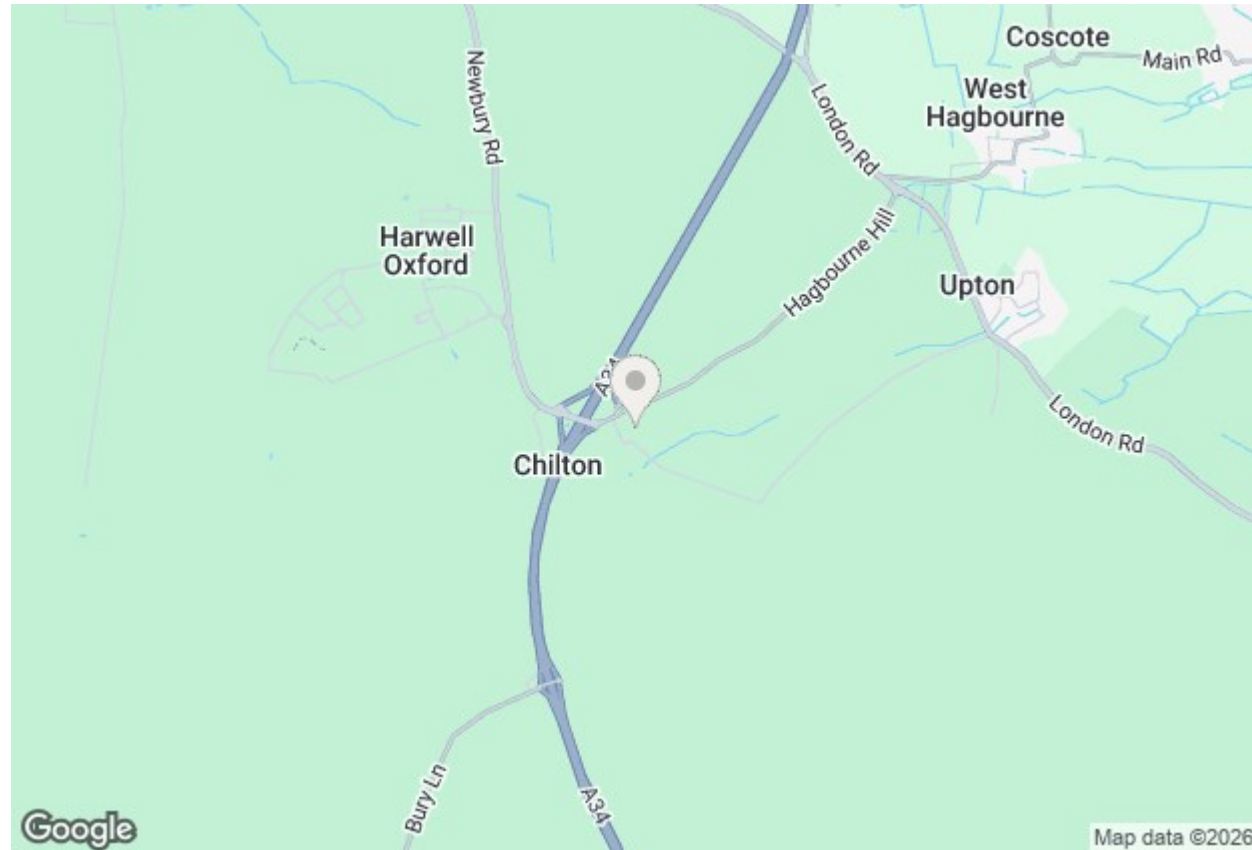
First Floor

Total Approx. Floor Area 1395 Sq.Ft. (129.60 Sq.M.)

All items illustrated on this plan are included in the "Total Approx Floor Area"

Energy Efficiency Rating

	Current	Potential
<i>Very energy efficient - lower running costs</i>		
(92 plus) A		
(81-91) B		
(69-80) C		79
(55-68) D	60	
(39-54) E		
(21-38) F		
(1-20) G		
<i>Not energy efficient - higher running costs</i>		
England & Wales	EU Directive 2002/91/EC	



Directions

Viewings

Viewings by arrangement only. Call 01235 514267 to make an appointment.

Council Tax Band

E